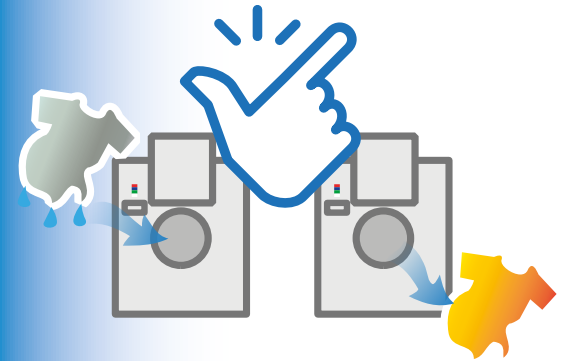




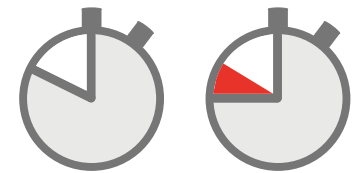
HH 1500

Horizontal
Hydroextractor

easier load/unload



less time



less cost



LOADING

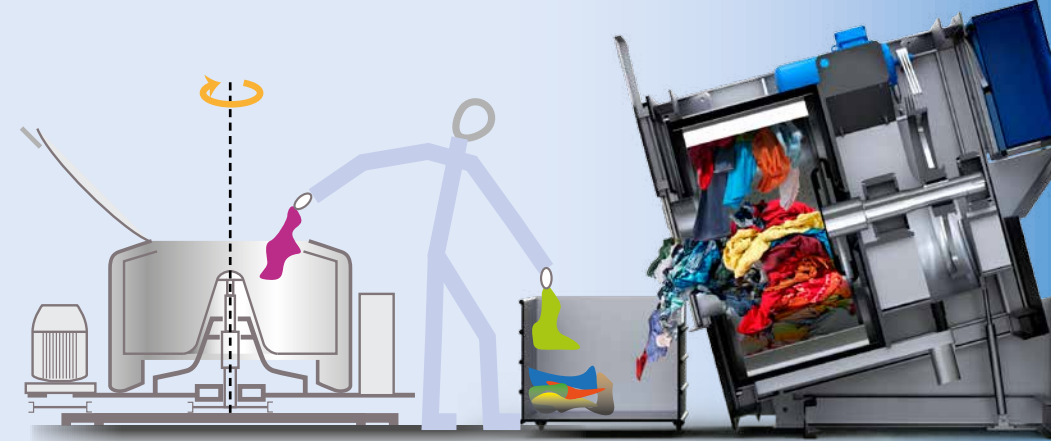


Vertical axis extractors need manual adjustment of garments into the drum

AUTOMATIC ADJUSTMENT

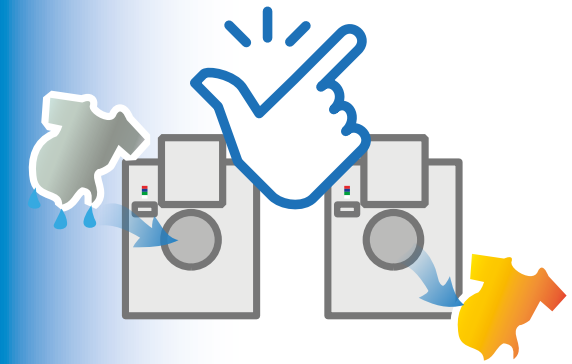


UNLOADING



Forward tilting to ease unload after extraction.

easier load/unload



The drain is located in the same line of our L 4200 and 5200 models.

The hydro-extractor can be installed in line and on the same waste water channel of the washing machines.

No special base is required.

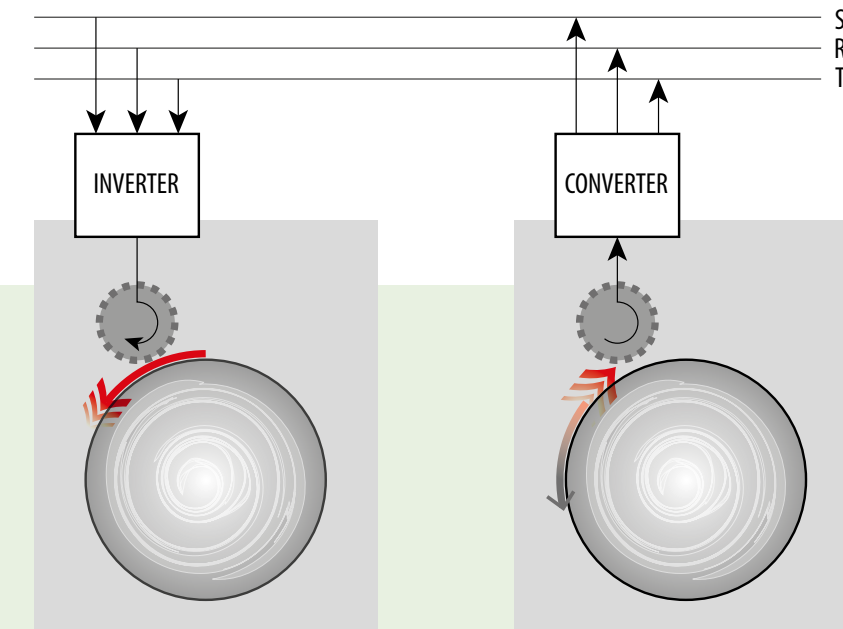
HH 1500 is a **very compact model**.

The electric box is installed on board.

The keyboard is on the front panel for a fast control and operation.

The gradual increase of spinning speed and our damping and **balancing system** avoid HH 1500 hydro-extractor to vibrate dangerously at high speed.

The use of an inverter allows to fit the right speed of extraction to the kind of fabric you treat.



ACCELERATING DRUM

BRAKING DRUM

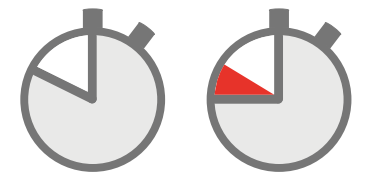
KERS

The hydro-extractor is supplied with KERS, **Kinetic Energy Recovery System**.

It is an electronic device which recollects part of the kinetic energy of the drum during the brake phase and reverts it into electric energy.

You can reuse the electric energy to move other machines.

less time



less cost





Forward tilting for
easier garments unloading



HH 1500

Horizontal
Hydroextractor



BRONGO srl

via del Fornaccio, 14 - loc. Vallina
50012 Bagno a Ripoli (FI) - Italy
tel. +39 055 696061 fax +39 055 696279
e-mail: brongo@brongo.com sales@brongo.com

www.brongo.com

TECNICAL FEATURES

Drum diameter 1500 mm.
Drum depth 750 mm.
Max. Load (wet garments) 400 Kg.
Max. speed 700 RPM
Variable extraction speed
Installed power 22 kW

EXTERNAL DIMENSIONS

Width 2100 mm.
Depth 2500 mm.
High 2300 mm.
Weight 5300 Kg.

made in Italy

